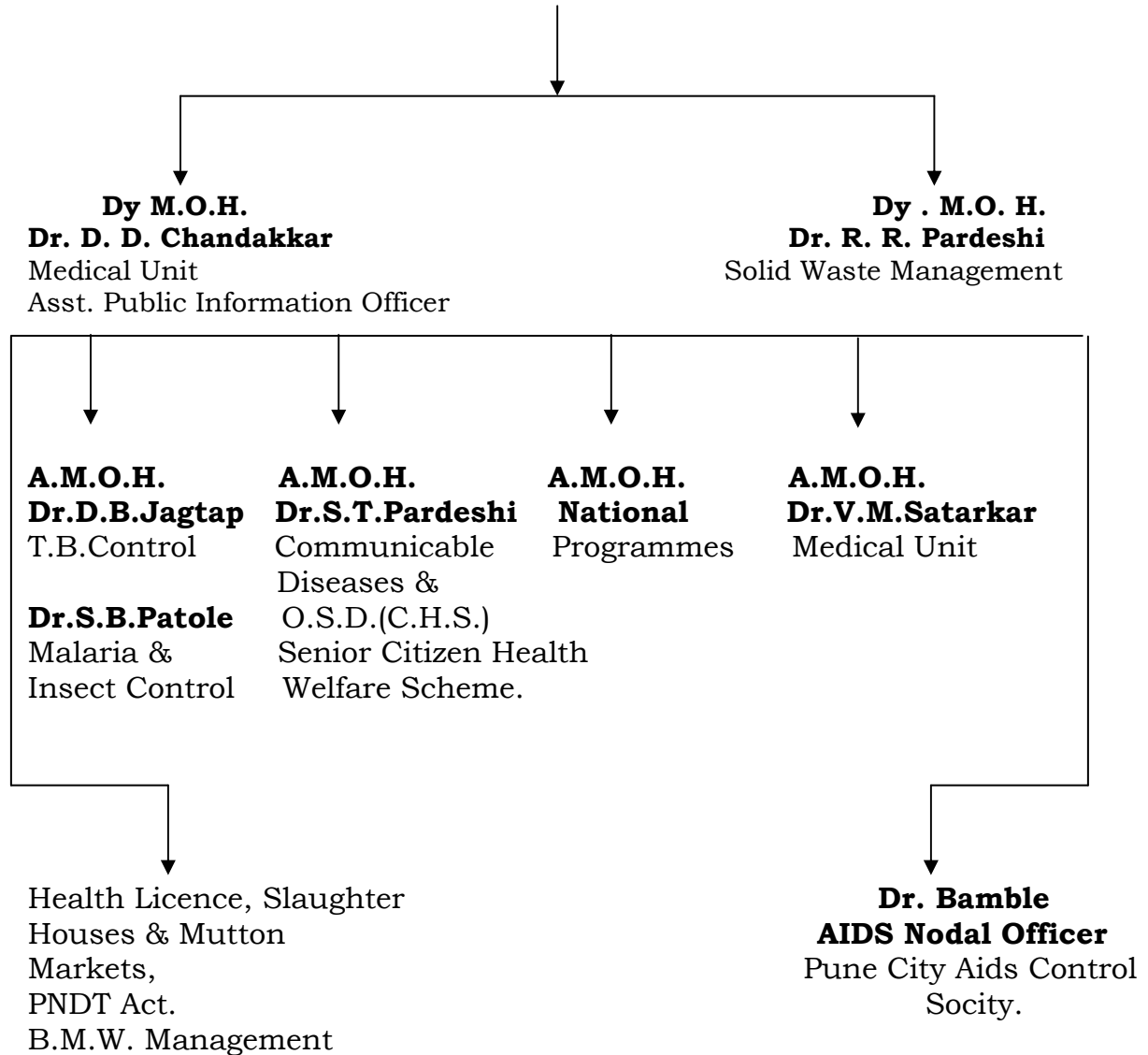


HEALTH DEPARTMENT
PUNE MUNICIPAL CORPORATION
HEALTH DEPARTMENT

PUNE MUNICIPAL CORPORATION

Health Department

Medical Officer of Health (M.O.H.) -
Dr. P. S. Dhaygude



DUTIES under section 63 (Obligatory)

A. 1) General Sanitation and Conservancy :-
Solid Waste Management .

- ▶ Road Sweeping
- ▶ Public latrines, Urinals, Bathrooms cleaning
- ▶ Open gutter cleaning
- ▶ Staff - Dy. M.O.H. (SWM) - Dr. R. R. Pardeshi

SANITATION		CONSERVANCY	
C. S. I.	2	C. C. I.	1
D. S. I. s	20	D.S. I.	1
Sanitary Inspectors	79	S.I.	6
Mokadams	121	Mokadams	44
Dry Sweepers	2048	Asst. Mokadams	32
Wet Sweepers	766	Bigaries	947
Drainage and Other	530		
Bigaris			
Safai Bigari :-	2782		
Rojandari Bigari :-	127		
3.8 Cubic Meter Containers		1259	
2.2 Cubic Meter Containers		81	
1.1 Cubic Meter Containers		210	
1.5 Cubic Meter Containers		581	
		<hr/>	
		2131	
Other collection points		38	
		<hr/>	
		2169	
Public Latrines	1358		
Public Urinals	900 + 153 Fibreglass		
Public Bathrooms	283		
Pay & use seats	12158		

B. Medical Units :-

- ▶ one general hospital
- ▶ one infections disease hospital
- ▶ 15 maternity homes
- ▶ 44 dispensaries
- ▶ two mobile dispensary
- ▶ two polyclinics
- ▶ one central immunization centre
- ▶ 7 ICDS projects
(Five Newly Sanctioned)
- ▶ 21 urban family welfare centres.

Staff:-

- ▶ A.M.O.H. (Dr. V. M. Satarkar)
- ▶ M.O. & R.M.O.s - 124
- ▶ Honorary specialists (about 120)
- ▶ Paramedical staff (about 900)
- ▶ Daily OPD - around 7500
- ▶ Total no. of beds - 750

C. Licence Unit :-

- ▶ Licences under P.F.A. - 11745
- ▶ Licences under B.P.M.C. Act. - 3329
- ▶ Nursing home registrations - 530
- ▶ Dog Licences - 367
- ▶ P.N.D.T. Registration - 380

Staff:-

- ▶ A.M.O.H. - Licences
(Dr. D.D. Chandakkar)
- ▶ Supervisor (food) - 1
- ▶ Chief Licence Inspector - 1
- ▶ Food Inspectors - 9

Staff:-

- ▶ Veterinary Superintendent - 1
- ▶ S.I. - 3
- ▶ Jr. Clerk - 1
- ▶ Mokadams - 14
- ▶ sweepers, Mehetars, Bigaries, fillers -54
- ▶ Mulanis - 2
- ▶ Slaughter House - 1
- ▶ Mutton Markets - 14
- ▶ Fish Markets - 5
- ▶ Beef Market - 1
- ▶ Private Licences - 587

*** Bio Medical Waste (Management & Handling) Rules - 1998**

*** The Pre Conception and Prenatal Diagnostic Techniques
(Prohibition of Sex Selection) Act - 2003
Act Implementation**

H. Section 64 :-

▶ Anti-Rabic treatment, provided free to BPL families of PMC in Dr. Kotnis Arogya Kendra.

I. Section 65 :-

▶ Provision of maintenance of lunatics and lepers.

J. National Health Programmes :-

- 1] Integrated Health and Family Welfare Programme. (RCH - Phase II)
- 2] National Immunization Programme (UIP)
- 3] National Blindness Control Programme
- 4] Revised National Tuberculosis Control Programme
- 5] National Malaria Control Programme
- 6] School Health Programme
- 7] National STD Control Programme
- 8] National Leprosy Control Programme etc.

K. Malaria and Insect Control :-

Duties :-

- 1] Control of Malaria
- 2] Mosquito control
- 3] Flies control
- 4] Bed bugs control
- 5] Rats control
- 6] Water hyacinth control

Staff:-

- AMOH - 1
- ▶ Biologists - 1 (from Govt.)
 - ▶ Medical Officer - 1 (from Govt.)
 - ▶ D.S.I. - 1
 - ▶ S.I. - 7
 - ▶ M.S.I. - 21
 - ▶ M.S.W. & S.F.W. - 119
 - ▶ Malaria Technicians - 4
 - ▶ Sr. Clerk - 1
 - ▶ Jr. Clerks - 6
 - ▶ F.W. & Bigaries. - 383
- Supervisor - 1,
Mokadam - 13 ,
Insect collector - 11,
Driver - 4,
Pinjara fitter-1,
peon - 3,

L. Management of fares and festivals :-

- e.g. ▶ Chaturshrungi fair
 ▶ Ganesh festival
 ▶ Pandharpur Wari (Palakhi)

M. Prohibition of stray animals :-

- Dogs.** ▶ daily around 10 - 15 stray dogs are caught.
 All are handed over to Blue Cross Society,
 S.P.C.A for sterilisation.
- Pigs.** ▶ Catching and killing is undertaken
 depending upon the complaints.

N. Contributory Health Scheme

1% basic pay + D.A. contribution of employee + provision from
PMC.

Following are the members of the scheme

- 1] PMC Employees
- 2] PMT Employees
- 3] Primary education board employees.
- 4] Pensioners
- 5] Councillors

O. Senior Citizen Welfare Scheme

Senior Citizen above 59 yrs. residing in PMC limit are eligible.
Run by PMC with Sahyadri Speciality hospital and Bharti hospital

P. Cyclist Accident Insurance Scheme

**Q. Sanitation ▶ Apex Committee
 ▶ Chakachak**

R. PC PNDDT Act Advisory Committee

S. Committee under Animal Birth Control Rules.

*** * ***